

Dear user,

Especially for night-time operation or in dark places, VARIO LED provides the option of illuminating the operating element. This ensures efficient and precise mounting of the operating key to the top of the spindle extension. The illumination is turned on or off in three simple steps. We ask you to carefully read and process the following instructions.

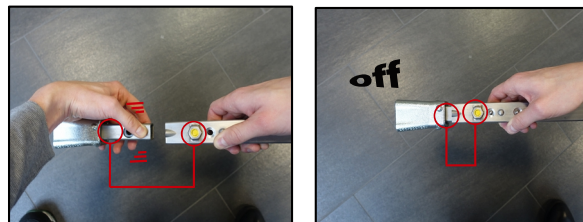


Turn on LED illumination



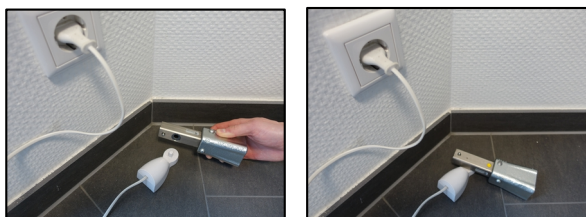
To turn on the illumination, press both detents on the operating nut together and mount the operating socket by aligning the detents parallel to the bore holes in the extension rod. Be sure to align the yellow dots on the extension rod and operating socket also. Push the operating nut into the outer pipe until the detents lock into the bore holes with an audible click. The illumination is now turned on and ready for operation.

Turn off LED illumination



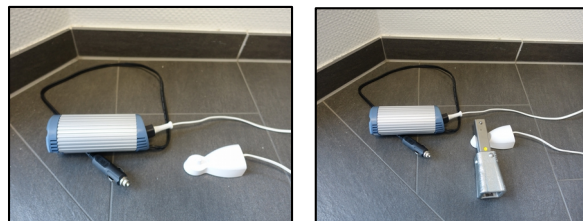
To turn off the illumination, disconnect the operating socket by pressing the two detents of the lower spring connection piece together and pulling the operating socket out of the extension rod. Now turn the operating socket 180° so that the yellow dot of the outer pipe is located opposite to the yellow dot of the operating socket and insert the operating socket into the extension rod. The illumination is now turned off.

Charge the LED operating socket



Insert the inductive charging station's plug into a 230V~ socket. To start charging, place the operating socket on the corresponding interface.

Charge the LED operating socket in a motor vehicle



To charge the operating socket in a motor vehicle, first connect the vehicle charger's plug to a 12V-port. Plug the inductive charging station into the vehicle charging adaptor. To start charging, place the operating socket on the corresponding interface.

Caution! Use only the provided (original) charger for charging the light battery!

Charger type Braun 4736
100-240 V~ IP67 50 - 60 Hz / 2W

Battery type NiMH
First charging time 24 hrs.
Repeat charging time min. 12 hrs.
Charging cycles approx.
(in accordance with the 500 times
Recom. charging periods of two months)
Charging temperature +5 up to +45°C
Operating temperature -20 up to +60°C

Disposal information:

Do not throw the charger and battery into a fire or into the domestic waste! KETTLER GmbH takes back the chargers and batteries that are to be discarded, thereby ensuring environmentally appropriate disposal.



For additional markings, see bottom of device.



Safety instructions

Never look directly into the light source! Eye injuries may occur!



The lamp works in water also.

→ After contact with water, allow the illumination unit to dry on the 25 square shaft with the closure facing upwards!

Incorrect use of the charger/car converter may lead to malfunctions (damage) of the device.

Devices must be opened by authorised personnel only! In case of malfunctions, please contact KETTLER GmbH.

The inductive charger may no longer be used in the following cases:

In the event of damage to the interface between the operating socket and the inductive charger.

If the cable connections show visible damage.

Regular inspection of the inductive charger as well as of the vehicle charger is recommended.

Outdoor use of inductive charger is not permitted.