

Dear user,

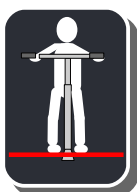
Super Vario operating key is a product that ensures an efficient and error-free operation with its technical and ergonomic properties. We ask you to carefully read and process the following instructions in order to make use of all advantages, to prevent damage to the product and to avoid physical injuries to you or others.

Intended use:

1. Super Vario operating key may be used for operating underground gas and water valves only. It may not be misused as a lever or striking tool!
2. Hitting the surface of the Super Vario operating key with hard objects must be avoided to avoid damages.
3. The artificial increase of torque by means of extension of the T-handle using additional pipes or bars is permitted.

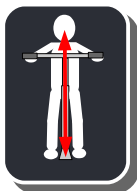
4. Safe positioning!

Ensure a firm and safe position before using the operating key. Unsurfaced ground, as well as soft and damp floors, must be stabilised before starting operation.



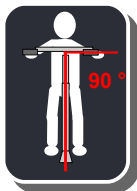
5. Stand upright!

For efficient power transmission, adjust the key to your height. Stand upright. Avoid unnatural („bent“) posture.



6. Turn centrally!

The operating key should be turned as centrally as possible to ensure ideal torque transmission.



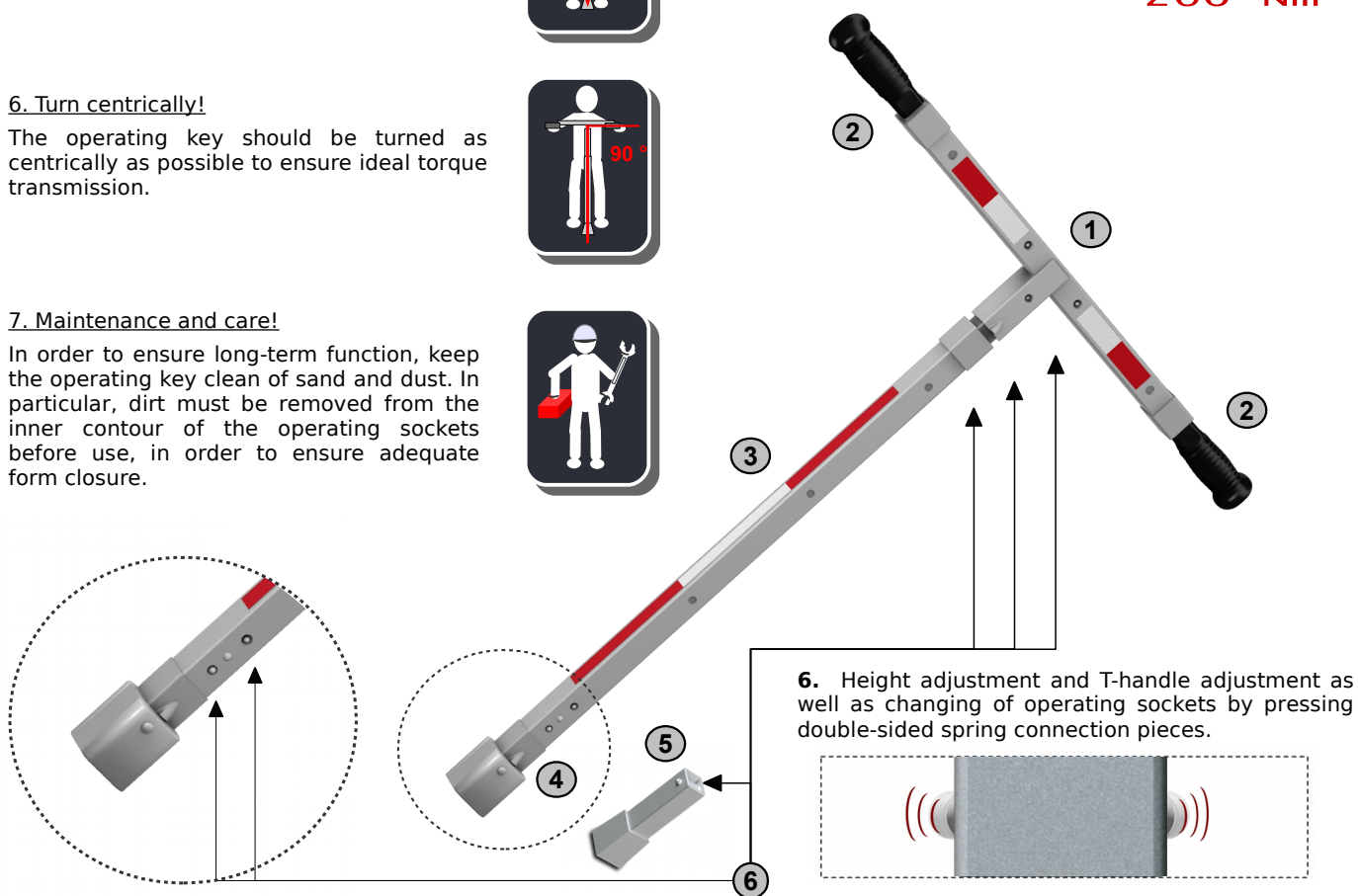
7. Maintenance and care!

In order to ensure long-term function, keep the operating key clean of sand and dust. In particular, dirt must be removed from the inner contour of the operating sockets before use, in order to ensure adequate form closure.

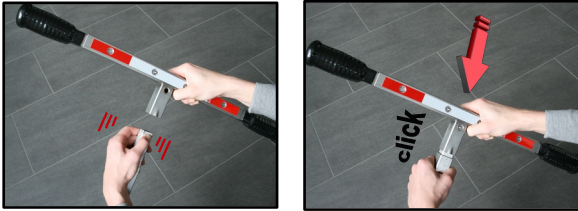


Technical set-up

1. T-handle with reflective foil (red/white)
2. T-handle extension
3. Extension rod with reflective foil (red/white)
4. Operating socket for gate valves (Square drive 27/32) **maximum load 1000 Nm**
5. Operating socket for service valves (Square drive 12/14) **maximum load 200 Nm**

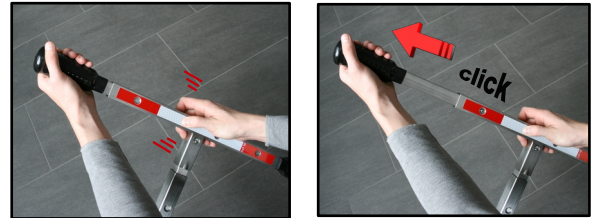


Mount T-handle



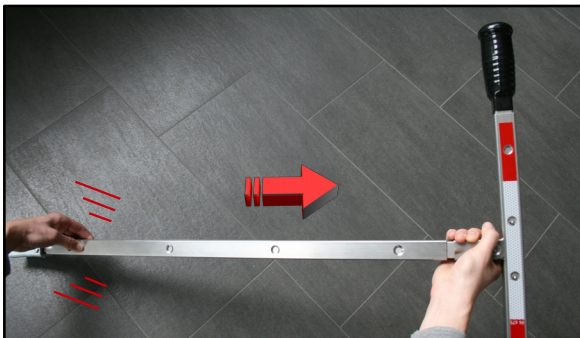
Press both detents of the spring connection piece at the upper end of the extension rod together and mount the T-handle by aligning the detents parallel to the bore holes in the T-handle. Push the T-handle onto the extension rod until the detents lock into the holes provided on the T-handle with an audible click.

Adjust handles

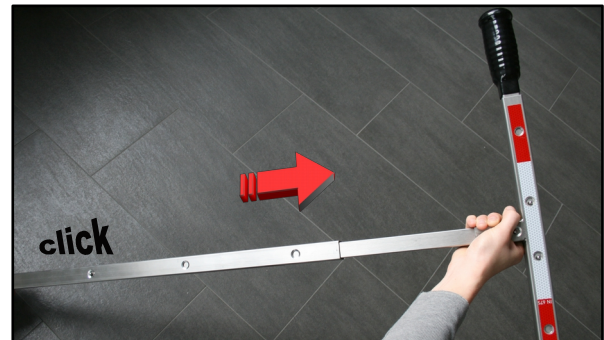


Press both detents of the spring connection piece on one side of the T-handle together and pull the handle until the detents lock into the bore holes on the T-handle with an audible click. Repeat the process on the opposite side. Reverse order to retract handles.

Adjust height

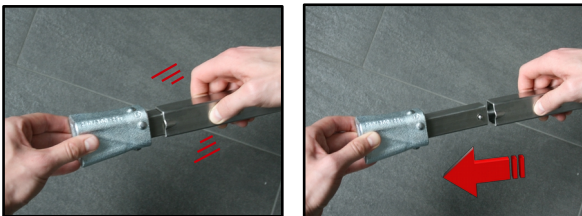


Press both detents of the upper spring connection piece of the lower extension rod together and simultaneously pull the T-handle in an upwards direction.

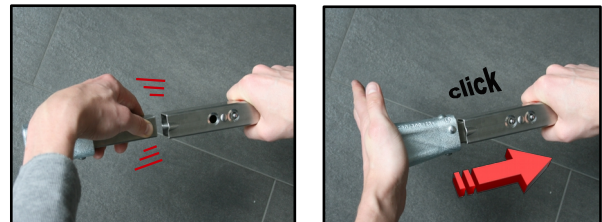


Pull the T-handle until the detents of the inner pipe lock into the bore holes on the outer pipe again with an audible click. Repeat this process until the desired length is obtained. Reverse order to retract the operating key.

Change operating nut



To disconnect the operating socket, press the two detents of the lower spring connection piece together and pull the operating socket out of the extension rod.



To mount the operating socket, press both detents on the operating nut together and mount the operating socket by aligning the detents parallel to the bore holes in the extension rod. Push the operating socket into the outer pipe until the detents lock into the bore holes with an audible click.

Check the Super Vario operating key for any damage on a regular basis and before every use!

The permissible total torque is (without operating nut) maximum 100Nm!



Safety instructions



The operating key may no longer be used in the following cases:

If the surface has visible cracks or plastic deformations.

In the case of serious forceful impact (e.g. being knocked down by vehicles, falling from a great height,..etc.)

An annual inspection of the Super Vario operating key is recommended.